

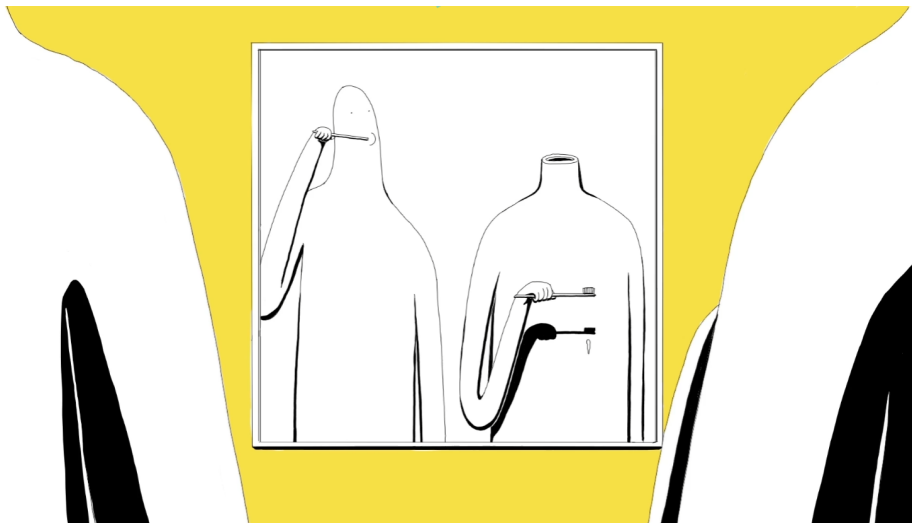
1. What type of documentary?

My documentary will be an expository documentary, following the opinion and stories of my interviewee on the problems with the education system for neurodivergent people.

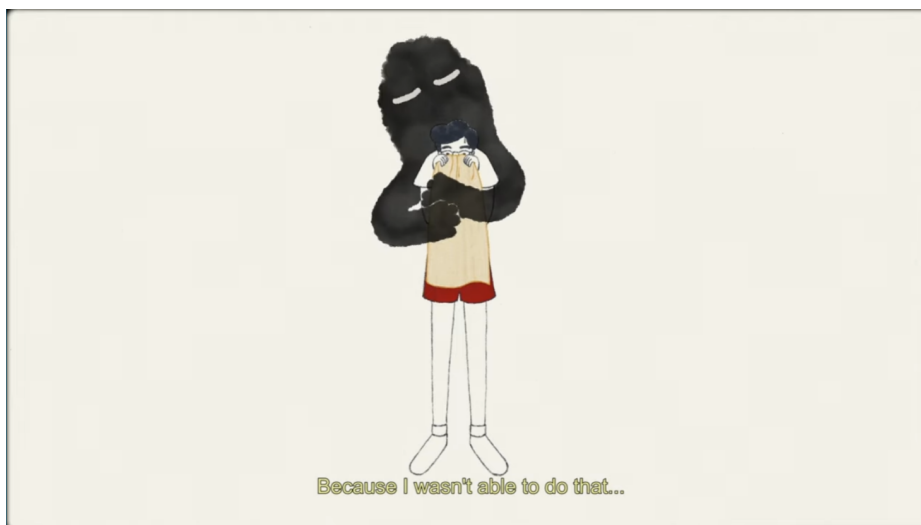
2. Why animation, What is the relationship between the subject and the medium (What animation technique)?

During my interview, a lot of visual things were described that I wouldn't be able to take photos or videos of (metaphors or memories of events). Being able to animate these things as they are described will clarify and add to what the interviewee said. What it feels like to be neurodivergent is also something very hard to capture visually in real life, but with animation I can add or exaggerate certain things to express those feelings more clearly.

film references:

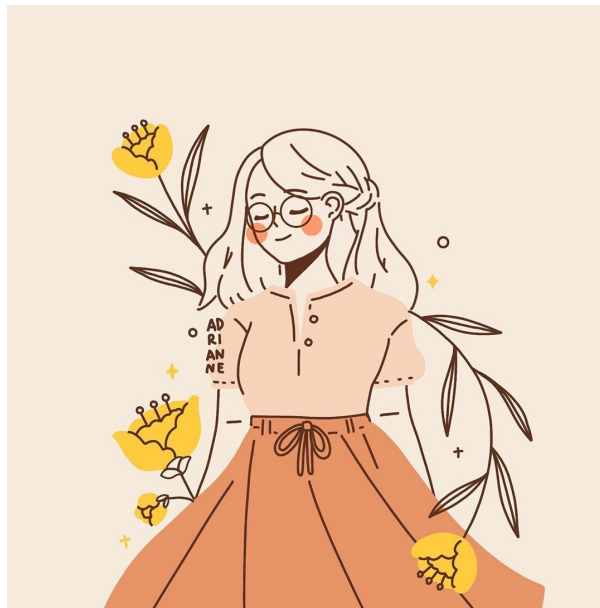


"[Ahead](#)" - simple but very clear style, usually only 1-2 colors per scene

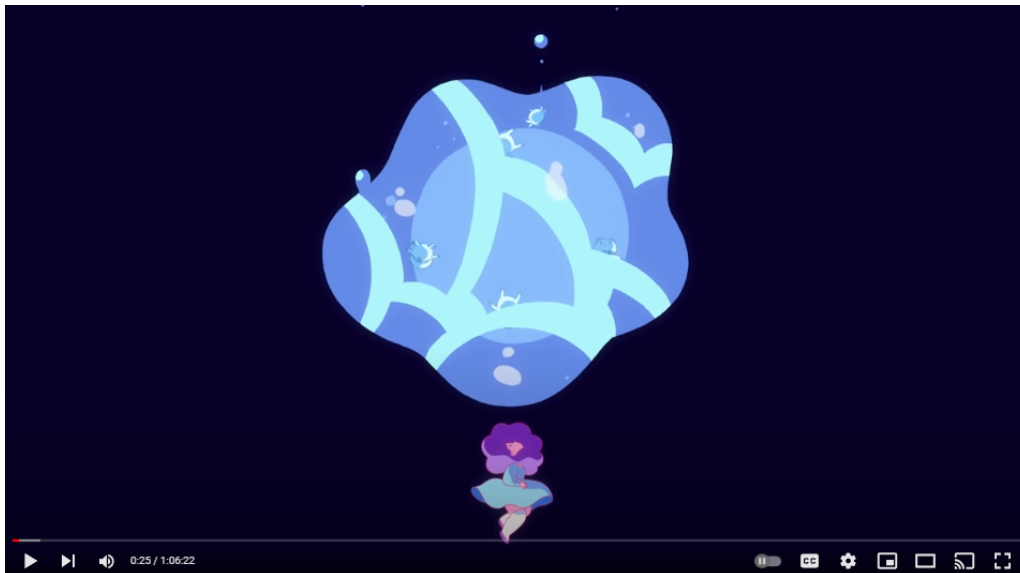


"[Récit de soi](#)" - simple style and muted colors, portrays emotions metaphorically

image references:



simple + pretty lines/colors



bee and puppocat style, brighter colors but still simple? (too complex but could still reference)

Time Schedule:

week 1: cut down audio, complete planning doc, make storyboard

week 2-3: complete sketches

week 4: complete lines

week 5: complete colors

week 5-6: compile in after effects, add sound