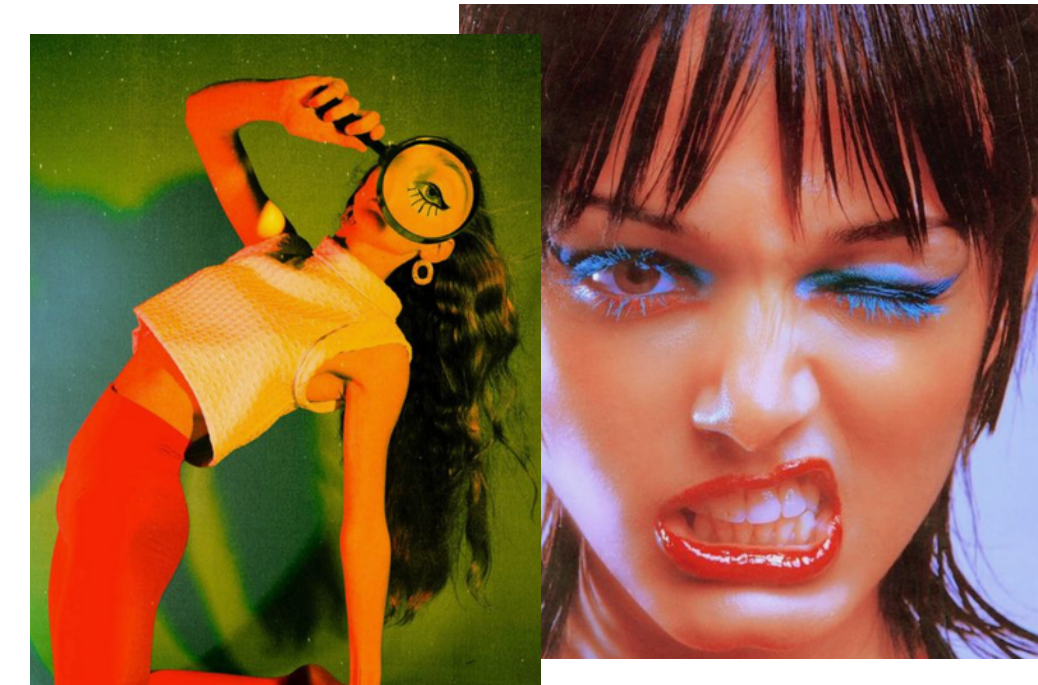


Palette Cleanser

A Murder Mystery that takes place in a world of color. Inspiration: The Capitol in the Hunger Games, Editorial Fashion, Zoolander, The Devil Wears Prada, Wes Anderson, Bullet Train, Clue.



Purposeful references to being “framed” through cinematography/costumes/color is the main mode of communication with the audience.

Costumes/Makeup: Experimental/bright colors

Location: Rypitic Room Escape



A young woman’s mysterious nature leads her to be the #1 suspect for a murder--she later discovers she was framed by an artist. The entire film looks like a piece of artwork, a reference to the fact that she was “framed”